



# TENECOR

THE WORLD'S FINEST AQUARIUMS

**Available Exclusively Through  
Our International Network of  
Authorized Dealers and Certified Installers**



AUTHORIZED  
DEALER



CERTIFIED  
INSTALLER

**Aquariums**

---

**Filtration Systems**

---

**Fine Aquarium Furnishings**

---

**Aquarium Lighting and Decorations**

---

**Aquarium Care Products**

**Standard Items / Retail Price List**

**February 1<sup>st</sup>, 2008**

## **Table of Contents**

<b><u>Title</u></b>	<b><u>Page No.</u></b>
Product Descriptions	3-4
Why Acrylic ? Why Tenecor ?	5
Simplicity Plus & Marine Ready Complete Aquarium Packages	6
Wave Aquarium Complete Package	6
Bull Nose Aquarium Complete Package	7
Cylinder Aquarium Complete Package	7
Rectangular, Pentagon, Quarter Cylinder, Ultraaquarium, Flat Back Hexagon, Bow Front, and Hexagon Complete Aquarium Packages	8-10
Standard Aquariums & Furniture	
Rectangular	11
Ultraaquariums	12
Flat Back Hexagon, Bow Front, Half Cylinder	13
Teneview, Pentagon, Quarter Cylinder	14
L-Shape, Vista, Hexagon	15
Table Top Aquariums	16
Living Picture Aquarium	16
Semi-Custom Options for Standard Aquariums & Furniture	17
External Wet/Dry Filters	18
Pre-Filters	19
Protein Skimmers for Marine Ready & Simplicity Plus Aquariums	19
Economy Fish Tank Stands	19
Aquarium Lighting Products	21
Maintenance Products	22
Important Information for Tenecor Aquarium Owners	22
Terms & Definitions	23
Freight Policies & Procedures	24
Terms and Conditions of Sale	25
Tenecor Aquarium Warranty	25



## **Product Descriptions**

**NEW PRODUCTS AND IMPROVEMENTS:** Tenecor is pleased to issue this new price list. You will find the following enhancements in our products and options to meet *your needs* for the finest in acrylic aquariums and aquatic products.

- **Expanded** offering of our popular **Aquarium Packages**.
- **Wilsonart**® **lamine** aquarium furniture.
- **New** aquariums: *Bull Nose Aquarium* and *Wave Aquarium*.
- **Streamlined** customization options.
- **Living Color**® synthetic coral inserts.
- **New** models in our popular Flat Back Hexagon, Ultraaquarium and Pentagon aquariums.

We appreciate your business and hope you find that our newest price list offers you more of what you are looking for. Please feel free to call us with suggestions and, as always, please call us for all your custom aquarium needs. We look forward to serving you !

**AQUARIUM PACKAGES:** Tenecor is now offering its smaller aquariums and some of our most popular larger sizes of Simplicity Plus and Marine Ready aquarium systems, complete with furniture and lighting as a complete package at significant savings to you. Now you can get Tenecor quality and craftsmanship without having to worry about whether the filtration and lighting will be adequate. On the other hand, if you are an aquatic enthusiast and want to “build your own” system you can do so with Tenecor’s traditional “ala carte” offering, semi-custom options and complete customization capability.

**SHOW AQUARIUMS:** Show Aquariums are Tenecor's improved version of the traditional, basic aquarium. Simple, versatile, and economical, Tenecor Show aquariums feature a clear acrylic top with filter slots, and extra large access holes with matching lids. Rectangular and other models, 72x24x30 or smaller, feature our signature large radius bends and are available with a clear, black, or deep blue background at the standard price. Show aquariums are ideal for those who already have filtration equipment, or wish to purchase their own. Show aquariums may be upgraded with pre-filters for safe and easy connection to external filtration equipment. Model numbers of the Show Aquarium indicate the shape of the aquarium and the approximate gallons. For Ultraaquariums, the thickness of the acrylic panels is taken into account in determining the approximate gallons of the aquarium.

**SIMPLICITY PLUS AQUARIUMS:** Simplicity Plus aquariums are a Tenecor original design in which the filter is built into the tank. This advanced wet/dry filter combines mechanical, chemical, and biological filtration for maximum efficiency with fresh or saltwater systems. All Simplicity Plus systems are designed to accommodate the maximum amount of bio-media for dependable, quiet operation. These aquariums have added a new dimension to the hobby and set a new standard in value. Simplicity Plus aquariums come complete with pre-filter sponge, bio-media, powerhead(s), and centipede return kit(s) installed at the factory. These systems may be upgraded with an airlift protein skimmer to optimize performance with saltwater systems. Simplicity Plus aquariums are recommended for freshwater and saltwater “fish only” aquariums.

**MARINE READY AQUARIUMS:** The majority of our aquariums are available as complete Marine Ready systems. This advanced system combines mechanical, chemical, and biological filtration for maximum efficiency with fresh or saltwater systems. Marine Ready aquariums include plumbed pre-filters, external wet/dry filters with bio-media, magnetic drive pumps, and deluxe plumbing packages. Marine Ready aquariums may be **upgraded** with one of our **Protein Skimmer packages** to optimize performance with saltwater aquariums. Our Silencer may be added to the prefilter that helps minimize filtration noise. The flexible design of this filtration also allows for easy installation of supplemental equipment such as U.V. sterilizers, chillers, etc. Marine Ready aquariums are



recommended for more demanding saltwater and reef systems. They are also commonly used for freshwater systems where external filtration is desired.

**ACRYLIC STANDS AND CANOPIES.** Tenecor acrylic stands and canopies are truly unique. Our stands feature lift-out doors for full access. Our stands are made using the same methods as our aquariums, providing an extra measure of safety by containing most filter drips and leaks. Tenecor's acrylic canopies are shipped with optional acrylic hinges which allow you to easily secure the canopy to your aquarium. Bent corners are standard on 60x24 or smaller acrylic stands and canopies.

**UNITEX STANDS AND CANOPIES.** Another Tenecor original, Unitex and Tenetex stands create the rich look of stone in several of the most popular decorating color combinations. Our design staff has culled thousands of color samples to present you with the most exciting variety of choices possible. The water resistant finish is extremely durable and easily touched up, ensuring years of satisfaction.

**FAUXSTONE STANDS AND CANOPIES.** Tenecor's most unique finish recreates the look and style of the Southwest with a Spanish stucco texture. Fauxstone is available in standard beige or can be ordered in hundreds of custom colors. The simple elegance of Fauxstone truly compliments any furnishing style.

**TENECOR CLASSIC OAK, VINTAGE MAPLE AND KNOTTY ALDER STANDS AND CANOPIES.** Tenecor's Knotty Alder, Oak and Maple stands are hand crafted to have the look and feel of fine furniture. Classic styling, handsome trim, and raised panel doors make Tenecor's Wood stands and canopies a true favorite. Available with your choice of eighteen Minwax® stain colors and sealed with clear coat for durability.

**LAMINATE STANDS AND CANOPIES.** Tenecor now offers Laminate Stands & Canopies in standard Wilsonart® colors at the same price as our Classic Wood furniture for all products except the Vista Stands and Canopies. Now your color and design options are virtually unlimited. Non-standard colors or special order laminates are also available as a custom order.

**CUSTOM SIZES AND SHAPES.** Many customers request customization of our standard products. For Rectangular, Flat Back Hexagon, Teneview, Bowfront, Pentagon and Quarter Cylinder shapes **reduction** of the length, width or height of a standard model is **generally** available for a \$100 upcharge. Simply find the next largest size and add \$100 to the cost of the aquarium, stand or canopy. For example, for a 94x22x28 show aquarium add \$100 to the cost of the R300T (96x24x30) show aquarium. The above does not apply to Ultraaquariums and modifying the shape, increasing the dimensions, expanding the size of the access openings or other modifications, which are not covered by our "Semi-Custom Options for Standard Aquariums and Furniture" (see page 16), require a custom price quote. Please contact your Tenecor Sales Engineer.



## **Why Acrylic?**

### **Acrylic is half the weight of glass.**

It's easier to ship, move, and set up your aquarium.

### **Acrylic is several times stronger than glass.**

It will not shatter, crack, or leak like glass can.

### **Acrylic distorts much less and is clearer than glass.**

In addition to having a slight green tint, glass has an index of refraction that is considerably different from water. Incidentally, clear acrylic has almost the same refractive index as seawater so there is no bending of light as it passes from the plastic into seawater, providing better and brighter color and sharper shapes in acrylic aquariums. The huge viewing windows in large public aquariums and oceanariums can be more than 12 inches thick, but because they are made of acrylic, they afford a very clear view of the water and ocean life they enclose. Acrylic also allows better penetration of your system lighting, which is especially important for reef systems.

### **Acrylic insulates better than glass.**

Acrylic controls water temperature fluctuations, one of the primary reasons for fish stress, disease, and death. Glass conducts heat and cold causing more fluctuations.

### **Acrylic seams are stronger than glass.**

Acrylic seams are molecular bonds and actually stronger than the acrylic itself. Silicone seams used on glass aquariums can dry out and weaken over time.

### **Acrylic seams are visually superior to glass.**

Acrylic seams are polished and nearly invisible. Silicone seams are clearly visible and have been known to discolor when exposed to certain fish medications.

### **Acrylic is easily refinished.**

If glass scratches it can not be repaired. Acrylic can be repaired with a variety of scratch removal kits. Even internal scratches can be repaired without removing the fish or water.

### **Custom formed designs are possible with acrylic.**

Acrylic can be formed to create interesting aquarium designs which you won't find with glass aquariums.

## **Why Tenecor?**

### **Tenecor's Lifetime Guarantee.**

By using only the finest domestic acrylic available we are able to offer a limited lifetime guarantee. You will never worry about a disastrous aquarium leak again.

### **Tenecor's Selection.**

We provide the widest selection of sizes, shapes, and styles. If you don't find what you want in our standard line, we'll design a custom aquarium just for you.

### **Tenecor's Workmanship.**

Our engineers and craftsmen are known for their attention to every detail. All Tenecor aquariums are manufactured in the U.S.A. with the finest materials available.

### **Tenecor's Standard Features.**

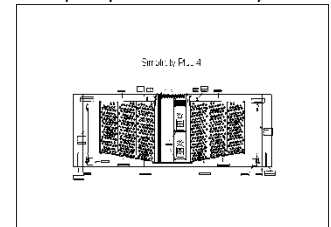
Most of our standard aquariums are available with bent corners and colored backs at no extra charge. Our Simplicity Plus and Marine Ready filtration packages include pumps and bio-media for one low price. Other companies charge a premium for these added features.

## **Simplicity Plus & Marine Ready** **Aquarium Packages**

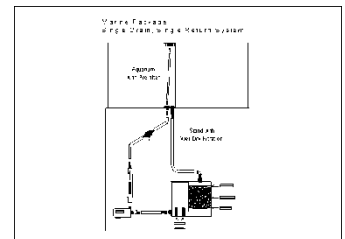
Tenecor now offers an *expanded* line of complete Aquarium systems. Our *newest* Aquarium Packages are the Wave Aquarium and Bull Nose Aquarium. Now, in addition to the 80 Cylinder Aquarium we offer some of our most popular standard Rectangular, Ultraaquarium, Flat Back Hexagon, Pentagon, Quarter Cylinder, Bow Front and Hexagon models as Aquarium Packages. *With our package systems you can enjoy approximately 20% savings as compared to the ala-carte pricing.*

These packages feature aquariums with our signature **Simplicity Plus** filtration system as well as our flexible and efficient **Marine Ready** filtration systems. In most cases, you have your choice of Black Acrylic, Unitex/Tenetex, Oak, Maple, Knotty Alder or Fauxstone stand/canopy sets. The Simplicity Plus Aquarium Packages come with Aqua-Lite freshwater power compact lights, while the Marine Ready Aquarium Packages include the SunPaq power compact lights. All Aquarium Packages feature a feeding hole with re-moveable in-tank lip for use with automatic feeders. These Aquarium Packages are sold as complete packages and modifications are not available. Neither Simplicity Plus or Marine Ready packages include protein skimmers.

Simplicity Plus Filtration System



Marine Ready Filtration System



## **Wave Aquarium**

The "Wave Aquarium" is Tenecor's newest creation utilizing our state of the art oven forming techniques. The sleek and elegant lines of the front of this aquarium, with matching curved front furniture will become the focal point of attention in your home or office.

The Wave Aquarium is sold as a package only with our popular Simplicity plus and Marine Ready filtration systems. The aquarium has a feeding hole with re-moveable in-tank lip for use with automatic feeders. Stand & Canopy sets are available in your choice of Oak, Maple, Black Acrylic or Unitex/Tenetex Paint finishes. A stand door is on each end of the stand.

The Marine Ready systems include SunPaq power compact lights, while the Simplicity Plus models include the Aqua-Lite.

The Wave Aquarium package is available as follows:

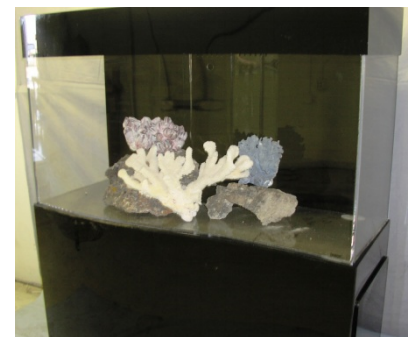
**W090 48x18x24 Simplicity Plus, Aqua-Lite 96 watts: \$3,400**

**W120 48x18x30 Simplicity Plus, Aqua-Lite 192 watts: \$3,999**

**W090 48x18x24 Marine Ready, SunPaq lights 260 watts: \$3,934**

**W120 48x18x30 Marine Ready, SunPaq lights 384 watts: \$4,470**

**NEW !!!**



### **Bull Nose Aquarium**

The "Bull Nose Aquarium" was created to meet the growing demand for "peninsula" type applications. One end of this tank has a flat back like a rectangle and the opposite end has a full radius like a half cylinder.

These models are fabricated with a seamless panel for the walls of the aquarium. The Bull Nose Aquarium is sold as a package only with our Marine Ready filtration system, which includes pre-filter, external wet/dry filter, pump, and plumbing fittings. The aquarium has a blue or black end panel as well as a feeding hole with re-moveable in-tank lip for use with automatic feeders. You also have your choice of stand & canopy sets available in Oak, Maple, Black Acrylic or Unitex/Tenetex Paint finishes. The canopy is hinged for access to the aquarium. The stand features a door on each side. The canopy is slotted on top to vent moisture and heat. All systems include Satellite power compact lights.

The standard Bull Nose aquarium is available in two models:

**BN110 48x24x24 Marine Ready, Satellite lights 384 watts: \$5,098**

**BN140 48x24x30 Marine Ready, Satellite lights 384 watts: \$5,665**



### **Cylinder Aquarium**

Cylinder aquariums are the ultimate design for 360 degree viewing. Tenecor uses only seamless cast cylinders made in the U.S. for a completely unobstructed view. This aquarium is available only as a complete system which includes aquarium, stand/canopy, filtration and lights. The filtration system features a black cylinder pre-filter in the center of the tank, external wet/dry filter, pump, and plumbing fittings. The pre-filter overflow comes complete with a dry raceway to conceal lighting cords. The stand & canopy set is available in either Oak, Maple, Unitex, or Tenetex finishes (acrylic cylinder stand/canopy set is not available). The stand features a flush mounted touch-latch door and the canopy is slotted on top to vent moisture and heat. The canopy must be lifted off to access the aquarium. This system also includes a feeding hole with re-moveable in-tank lip for use with automatic feeders and electrical cord grommet, requires customer to a drill hole in the stand. Dimensions: Aquarium: 27.5" x 28.5"H, Stand: 27.625" x 28.25"H, Canopy: 28.5" x 7"H.

**80 Cylinder Marine Ready Aquarium, Stand & Canopy,  
Aqua-Lites 72 watts: \$4,999**

**80 Cylinder Marine Ready Aquarium, Stand & Canopy,  
Satellite Lights 160 watts: \$4,999**





## Rectangular Aquarium Packages



RECTANGLE AQUARIUM PACKAGES						
MODEL #	DIMENSIONS L"xW"xH"	AQUARIUM	LIGHT	WATTS	ACRYLIC/ UNITEX/ TENETEX	OAK/MAPLE/ALDER/ FAUXSTONE/ LAMINATE
R020R	24x13x16	20R SIMP +	AQUA-LITE	36	\$964	\$1,280
R020L	30x12x12	20L SIMP +	AQUA-LITE	36	\$989	\$1,245
R029	30x12x18	29 SIMP +	AQUA-LITE	36	\$1,071	\$1,327
R030	36x12x16	30 SIMP +	AQUA-LITE	65	\$1,157	\$1,398
R030H	24x13x24	30H SIMP +	AQUA-LITE	36	\$1,065	\$1,328
R040	36x15x16	40 SIMP +	AQUA-LITE	65	\$1,244	\$1,447
		40 MARINE READY	SUNPAQ	128	\$1,756	\$1,958
R045H	36x12x24	45H SIMP +	AQUA-LITE	65	\$1,271	\$1,512
		45H MARINE READY	SUNPAQ	64	\$1,645	\$1,886
R050	36x15x20	50 SIMP +	AQUA-LITE	65	\$1,257	\$1,459
		50 MARINE READY	SUNPAQ	128	\$1,796	\$2,000
R055H	36x15x24	55H SIMP +	AQUA-LITE	65	\$1,381	\$1,585
		55H MARINE READY	SUNPAQ	128	\$1,927	\$2,130
R055R	36x18x20	55R SIMP +	AQUA-LITE	65	\$1,326	\$1,543
		55R MARINE READY	SUNPAQ	128	\$1,870	\$2,087
R055S	48x13x20	55S SIMP +	AQUA-LITE	96	\$1,413	\$1,627
		55S MARINE READY	SUNPAQ	192	\$1,898	\$2,114
R060	48x15x18	60 SIMP +	AQUA-LITE	96	\$1,565	\$1,801
		60 MARINE READY	SUNPAQ	192	\$2,053	\$2,289
R065H	36x18x24	65H SIMP +	AQUA-LITE	130	\$1,649	\$1,866
		65H MARINE READY	SUNPAQ	128	\$2,221	\$2,438
R075	48x18x20	75 SIMP +	AQUA-LITE	96	\$1,688	\$1,876
		75 MARINE READY	SUNPAQ	260	\$2,425	\$2,613
R120R	48x24x24	120R SIMP +	AQUA-LITE	192	\$2,278	\$2,471
		120R MARINE READY	SUNPAQ	384	\$3,021	\$3,214
R150R	48x24x30	150R SIMP +	AQUA-LITE	192	\$2,845	\$3,038
		150R MARINE READY	SUNPAQ	384	\$3,304	\$3,497
R150H	60x24x24	150H SIMP +	AQUA-LITE	260	\$3,060	\$3,412
		150H MARINE READY	SUNPAQ	520	\$3,732	\$4,084
R180H	72x24x24	180H SIMP +	AQUA-LITE	260	\$3,555	\$3,882
		180H MARINE READY	SUNPAQ	520	\$4,330	\$4,658
R185T	60x24x30	185T SIMP +	AQUA-LITE	260	\$3,943	\$4,296
		185T MARINE READY	SUNPAQ	520	\$4,545	\$4,898
R225T	72x24x30	225T SIMP +	AQUA-LITE	288	\$4,285	\$4,613
		225T MARINE READY	SUNPAQ	712	\$5,065	\$5,391
R240H	96x24x24	240H SIMP +	AQUA-LITE	384	\$4,724	\$5,080
		240H MARINE READY	SUNPAQ	768	\$5,121	\$5,477
R300T	96x24x30	300T SIMP +	AQUA-LITE	384	\$5,164	\$5,520
		300T MARINE READY	SUNPAQ	960	\$5,842	\$6,200



## Pentagon And Quarter Cylinder Aquarium Packages

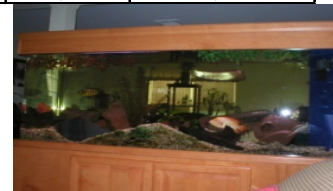


PENTAGON AQUARIUM PACKAGES						
MODEL #	DIMENSIONS L"xW"xH"	AQUARIUM	LIGHT	WATTS	ACRYLIC/ UNITEX/ TENETEX	OAK/MAPLE/ALDER/ FAUXSTONE/ LAMINATE
P050	24x24x24	P050 SIMP +	AQUA-LITE	96	\$1,488	\$1,811
		P050 MARINE READY	SUNPAQ	96	\$1,820	\$2,145
P070	24x24x30	P070 SIMP +	AQUA-LITE	96	\$1,717	\$2,041
		P070 MARINE READY	SUNPAQ	96	\$2,038	\$2,362
P095	36x36x24	P095 SIMP +	AQUA-LITE	130	\$2,445	\$2,806
		P095 MARINE READY	SUNPAQ	288	\$3,189	\$3,550
P120	36x36x30	P120 SIMP +	AQUA-LITE	192	\$2,989	\$3,350
		P120 MARINE READY	SUNPAQ	288	\$3,510	\$3,871

QUARTER CYLINDER AQUARIUM PACKAGES						
MODEL #	DIMENSIONS L"xW"xH"	AQUARIUM	LIGHT	WATTS	ACRYLIC/ UNITEX/ TENETEX	OAK/MAPLE/ALDER/ FAUXSTONE/ LAMINATE
Q050	24x24x24	Q050 SIMP +	AQUA-LITE	72	\$1,996	\$2,094
		Q050 MARINE READY	SUNPAQ	96	\$2,349	\$2,447
Q070	24x24x30	Q070 SIMP +	AQUA-LITE	72	\$2,272	\$2,369
		Q070 MARINE READY	SUNPAQ	96	\$2,611	\$2,708
Q095	36x36x24	Q095 SIMP +	AQUA-LITE	96	\$3,154	\$3,263
		Q095 MARINE READY	SUNPAQ	288	\$3,925	\$4,034
Q120	36x36x30	Q120 SIMP +	AQUA-LITE	192	\$3,790	\$3,901
		Q120 MARINE READY	SUNPAQ	288	\$4,315	\$4,423



## Ultraquarium Packages



ULTRAQUARIUM PACKAGES						
MODEL #	DIMENSIONS L"xW"xH"	AQUARIUM	LIGHT	WATTS	ACRYLIC/ UNITEX/ TENETEX	OAK/MAPLE/ALDER/ FAUXSTONE/ LAMINATE
U315	96x24x36	315 SIMP +	AQUA-LITE	384	\$6,644	\$6,982
		315 MARINE READY	SUNPAQ	960	\$7,128	\$7,466
U330	96x30x30	330 SIMP +	AQUA-LITE	576	\$6,944	\$7,638
		330 MARINE READY	SUNPAQ	960	\$7,177	\$7,872
U400	96x30x36	400 SIMP +	AQUA-LITE	768	\$7,585	\$8,280
		400 MARINE READY	SUNPAQ	1,152	\$8,472	\$9,167
U460	96x36x36	460 SIMP +	AQUA-LITE	768	\$8,750	\$9,566
		460 MARINE READY	SUNPAQ	1,170	\$9,732	\$10,549
U370	120x24x36	370 MARINE READY	SUNPAQ	966	\$9,557	\$10,445
U410	120x30x30	410 MARINE READY	SUNPAQ	1,152	\$8,748	\$9,723
U575	120x36x36	575 MARINE READY	SUNPAQ	1,440	\$11,774	\$12,849



## Flatback Hexagon And Bow Front Aquarium Packages



FLAT BACK HEXAGON AQUARIUM PACKAGES						
MODEL #	DIMENSIONS L"xW"xH"	AQUARIUM	LIGHT	WATTS	ACRYLIC/ UNITEX/ TENETEX	OAK/MAPLE/ALDER/ FAUXSTONE/ LAMINATE
F020	30x12x12	20 SIMP +	AQUA-LITE	36	\$1,134	\$1,416
F050	36x18x20	50 SIMP +	AQUA-LITE	65	\$1,403	\$1,613
		50 MARINE READY	SUNPAQ	130	\$1,806	\$2,017
F065	48x18x20	65 SIMP +	AQUA-LITE	96	\$1,819	\$2,100
		65 MARINE READY	SUNPAQ	192	\$2,470	\$2,751
F085	48x18x24	85 SIMP +	AQUA-LITE	96	\$1,931	\$2,211
		85 MARINE READY	SUNPAQ	288	\$2,742	\$3,021
F135	60x18x30	135 SIMP +	AQUA-LITE	260	\$3,263	\$3,572
		135 MARINE READY	SUNPAQ	384	\$3,639	\$3,949
BOW FRONT AQUARIUM PACKAGES						
MODEL #	DIMENSIONS L"xW"xH"	AQUARIUM	LIGHT	WATTS	ACRYLIC/ UNITEX/ TENETEX	OAK/MAPLE/ALDER/ FAUXSTONE/ LAMINATE
B100	48x24x24	B100 SIMP +	AQUA-LITE	192	\$3,367	\$3,833
		B100 MARINE READY	SUNPAQ	288	\$3,992	\$4,459
B135	60x24x24	B135 SIMP +	AQUA-LITE	192	\$4,015	\$4,360
		B135 MARINE READY	SUNPAQ	452	\$4,676	\$5,021



## Hexagon Aquarium Packages



HEXAGON AQUARIUM PACKAGES						
MODEL #	DIMENSIONS L"xW"xH"	AQUARIUM	LIGHT	WATTS	ACRYLIC/ UNITEX/ TENETEX	OAK/MAPLE/ALDER/ FAUXSTONE/ LAMINATE
H055	25x24	H055 MARINE READY	SUNPAQ	192	\$1,839	\$2,085
H075	25x30	H075 MARINE READY	SUNPAQ	192	\$1,994	\$2,240

## Rectangular Aquariums

Rectangular aquariums have long been the most popular style available. These models are commonly placed against a wall, in a corner, or in the middle of a room for 360° viewing. Rectangular models are also frequently used for room dividers and in-wall installations. Rectangular models that are 72" long or less feature bent (seamless) front corners. Standard rectangular aquariums are made from ½", 3/8" or ¼" acrylic.



RECTANGULAR						
SPECIFICATIONS		AQUARIUMS			STANDS AND CANOPIES	
MODEL #	DIMENSIONS L"xW"xH"	SHOW AQUARIUM	SIMPLICITY PLUS	MARINE READY	ACRYLIC/ UNITEX/ TENETEX	OAK/MAPLE/ALDER/ FAUXSTONE/ LAMINATE
R070T	36x15x30	\$725	\$1,106	\$1,550	\$759	\$991
R075	48x18x20	\$510	\$825	\$1,440	\$947	\$1,161
R075H	48x15x24	\$643	\$909	\$1,569	\$905	\$1,174
R075L	60x18x16	\$455	\$803	\$1,382	\$1,104	\$1,409
R085T	36x18x30	\$777	\$1,338	\$1,787	\$825	\$1,074
R090H	48x18x24	\$652	\$1,026	\$1,663	\$947	\$1,161
R095T	48x15x30	\$991	\$1,667	\$2,004	\$905	\$1,174
R100R	48x24x20	\$621	\$1,085	\$1,633	\$1,077	\$1,298
R100	60x18x20	\$621	\$1,092	\$1,709	\$1,104	\$1,409
R120T	48x18x30	\$1,064	\$1,740	\$2,075	\$947	\$1,161
R120R	48x24x24	\$851	\$1,205	\$1,860	\$1,077	\$1,298
R125H	60x18x24	\$835	\$1,500	\$1,941	\$1,104	\$1,409
R125L	72x18x20	\$889	\$1,392	\$1,994	\$1,404	\$1,721
R135H	72x18x24	\$1,056	\$1,639	\$2,217	\$1,404	\$1,721
R140T	60x18x30	\$1,141	\$2,063	\$2,301	\$1,104	\$1,409
R150R	48x24x30	\$1,171	\$1,851	\$2,182	\$1,077	\$1,298
R150H	60x24x24	\$952	\$1,652	\$2,051	\$1,445	\$1,847
R150	72x24x20	\$952	\$1,704	\$2,113	\$1,599	\$1,972
R170T	72x18x30	\$1,520	\$2,580	\$2,938	\$1,404	\$1,721
R180H	72x24x24	\$1,161	\$2,062	\$2,580	\$1,599	\$1,972
R185T	60x24x30	\$1,551	\$2,660	\$2,980	\$1,445	\$1,847
R200	96x24x20	\$1,175	\$2,126	\$2,592	\$1,927	\$2,334
R225T	72x24x30	\$1,705	\$2,770	\$3,125	\$1,599	\$1,972
R240T	96x18x30	\$1,959	\$3,314	\$3,378	\$1,821	\$2,091
R240H	96x24x24	\$1,475	\$2,827	\$2,894	\$1,927	\$2,334
R300T	96x24x30	\$1,960	\$3,329	\$3,424	\$1,927	\$2,334
R300S	96x30x24	\$2,150	\$3,506	\$3,411	\$2,094	\$2,926
R300L	120x24x24	\$2,358	Custom	\$3,467	\$2,283	\$3,210
R350	96x36x24	\$2,311	\$3,644	\$3,572	\$2,331	\$3,331

## Ultraaquariums

These are Tenecor's popular larger aquariums in the 300 to 1500 gallon range, utilizing  $\frac{3}{4}$ " or thicker acrylic. Ultraaquarium Show and Marine Ready prices include a colored back. Ultraaquarium Simplicity Plus is available as a standard product in 96" and 72" lengths up to 36" high and in other sizes on a custom basis. AUltraaquariums have square corners standard. Steel stands with or without decorative facades are available on a custom quote basis.



ULTRAQUARIUMS						
SPECIFICATIONS		AQUARIUMS			STANDS AND CANOPIES	
MODEL #	DIMENSIONS L"xW"xH"	SHOW AQUARIUM	SIMPLICITY PLUS	MARINE READY	UNITEX/ TENETEX	OAK/MAPLE/ KNOTTY ALDER FAUXSTONE/ LAMINATE
U230	72x24x36	\$2,560	\$4,239	\$4,067	\$1,603	\$1,992
U305	72x24x48	\$4,711	Custom	\$6,842	\$1,603	\$1,992
U300	72x30x36	\$2,615	\$4,212	\$4,515	\$1,633	\$2,579
U390S	72x30x48	\$5,065	Custom	\$7,199	\$1,633	\$2,579
U350	72x36x36	\$4,555	\$6,253	\$6,687	\$2,041	\$2,963
U460S	72x36x48	\$8,228	Custom	\$11,191	\$2,041	\$2,963
U265R	96x24x30	\$2,707	\$4,192	\$3,967	\$1,922	\$2,290
U315	96x24x36	\$2,768	\$4,440	\$4,366	\$1,922	\$2,290
U405	96x24x48	\$4,489	Custom	\$6,518	\$1,922	\$2,290
U500	96x24x60	\$8,437	Custom	\$11,263	\$1,922	\$2,290
U330	96x30x30	\$3,004	\$4,479	\$4,365	\$2,073	\$2,828
U400	96x30x36	\$3,028	\$4,898	\$5,161	\$2,073	\$2,828
U515	96x30x48	\$5,291	Custom	\$7,642	\$2,073	\$2,828
U635	96x30x60	\$9,107	Custom	\$12,513	\$2,073	\$2,828
U400L	96x36x30	\$3,300	\$4,898	\$5,294	\$2,307	\$3,194
U460	96x36x36	\$4,083	\$5,820	\$6,217	\$2,307	\$3,194
U610	96x36x48	\$6,802	Custom	\$9,764	\$2,307	\$3,194
U775	96x36x60	\$9,779	Custom	\$13,572	\$2,307	\$3,194
U420	96x48x24	\$2,695	\$4,159	#VALUE!	\$2,380	\$3,502
U535	96x48x30	\$2,977	\$4,558	\$4,973	\$2,380	\$3,502
U620	96x48x36	\$5,571	\$7,240	\$8,316	\$2,380	\$3,502
U830	96x48x48	\$9,632	Custom	\$12,981	\$2,380	\$3,502
U1050	96x48x60	\$11,120	Custom	\$16,211	\$2,380	\$3,502
U325	120x24x30	\$3,255	Custom	\$4,341	\$2,357	\$3,323
U370	120x24x36	\$4,515	Custom	\$6,442	\$2,357	\$3,323
U495	120x24x48	\$9,030	Custom	\$11,132	\$2,357	\$3,323
U625	120x24x60	\$11,445	Custom	\$14,485	\$2,357	\$3,323
U325L	120x30x24	\$3,255	Custom	\$4,366	\$2,515	\$3,575
U410	120x30x30	\$3,570	Custom	\$5,387	\$2,515	\$3,575
U475	120x30x36	\$5,355	Custom	\$7,280	\$2,515	\$3,575
U630	120x30x48	\$10,080	Custom	\$12,972	\$2,515	\$3,575
U800	120x30x60	\$11,655	Custom	\$15,083	\$2,515	\$3,575
U390	120x36x24	\$3,300	Custom	\$5,203	\$2,693	\$3,861
U500L	120x36x30	\$3,885	Custom	\$5,703	\$2,693	\$3,861
U575	120x36x36	\$5,880	Custom	\$8,415	\$2,693	\$3,861
U770	120x36x48	\$10,980	Custom	\$14,021	\$2,693	\$3,861
U970	120x36x60	\$12,495	Custom	\$17,224	\$2,693	\$3,861
U525	120x48x24	\$3,990	Custom	\$5,832	\$3,123	\$4,187
U670	120x48x30	\$4,410	Custom	\$6,839	\$3,123	\$4,187
U775L	120x48x36	\$6,615	Custom	\$9,537	\$3,123	\$4,187
U1045	120x48x48	\$12,600	Custom	\$17,000	\$3,123	\$4,187
U1320	120x48x60	\$14,385	Custom	\$19,112	\$3,123	\$4,187

## Flat Back Hexagon Aquariums

Tenecor Flat Back Hexagon aquariums are a unique alternative to the traditional rectangular shape. The one piece front is beveled at both front corners providing a stimulating visual display. All Flat Back Hexagons feature bent front corners.



FLATBACK HEXAGON						
SPECIFICATIONS		AQUARIUMS			STANDS AND CANOPIES	
MODEL #	DIMENSIONS L"xW"xH"	SHOW AQUARIUM	SIMPLICITY PLUS	MARINE READY	UNITEX/ TENETEX	OAK/MAPLE/ KNOTTY ALDER FAUXSTONE/ LAMINATE
F085	48x18x24	\$676	\$1,048	\$1,684	\$1,004	\$1,323
F090	60x18x20	\$697	\$1,171	\$1,786	\$1,188	\$1,541
F105	48x18x30	\$1,152	\$1,827	\$2,162	\$1,004	\$1,323
F110	60x18x24	\$927	\$1,630	\$2,090	\$1,188	\$1,541
F125	72x18x24	\$1,112	\$1,815	\$2,272	\$1,515	\$1,859
F135	60x18x30	\$1,214	\$2,139	\$2,378	\$1,188	\$1,541
F160	72x18x30	\$1,531	\$2,592	\$2,949	\$1,515	\$1,859

## Bow Front Aquariums

Tenecor's Bowfront aquarium provides a unique and graceful appearance in any setting that accentuates your aquatic display. Bowfront stands have the door(s) placed on the front panel.



BOW FRONT							
SPECIFICATIONS		AQUARIUMS			STANDS AND CANOPIES		
MODEL #	DIMENSIONS L"xW"xH"	SHOW AQUARIUM	SIMPLICITY PLUS	MARINE READY	ACRYLIC	UNITEX TENETEX	OAK/MAPLE/ALDER FAUXSTONE/ LAMINATE
B100	48x24x24	\$1,293	\$1,682	\$2,312	\$1,349	\$1,843	\$2,374
B135	60x24x24	\$1,426	\$2,126	\$2,525	\$1,574	\$2,137	\$2,531
B170	72x24x24	\$1,559	\$2,474	\$2,990	\$1,798	\$2,437	\$2,689

## Half Cylinder Aquariums

The half cylinder is one of Tenecor's newer standard designs. Our advanced forming techniques allow us to manufacture an aquarium with an amazing "all around" panoramic front viewing panel when this aquarium is placed against a wall. All half cylinder stands feature a formed front door that matches the shape of the stand.



HALF CYLINDER							
SPECIFICATIONS		AQUARIUMS			STANDS AND CANOPIES		
MODEL #	DIMENSIONS L"xW"xH"	SHOW AQUARIUM	SIMPLICITY PLUS	MARINE READY	ACRYLIC	UNITEX TENETEX	OAK/MAPLE/ALDER FAUXSTONE/ LAMINATE
HC110	48x24x24	\$1,296	\$1,651	\$2,308	\$2,106	\$2,772	\$2,990
HC130	48x24x30	\$1,537	\$2,219	\$2,548	\$2,106	\$2,772	\$2,990

## Teneview Aquariums

The Teneview concave front was Tenecor's original formed panel aquarium. Its graceful curved front creates a stunning display that's appealing from any angle. Concave stands will have the doors placed on the ends. Rectangular stands are also popular for these models.



TENEVIEW							
SPECIFICATIONS		AQUARIUMS			STANDS AND CANOPIES		
MODEL #	DIMENSIONS L"xW"xH"	SHOW AQUARIUM	SIMPLICITY PLUS	MARINE READY	ACRYLIC	UNITEX TENETEX	OAK/MAPLE/ALDER FAUXSTONE/ LAMINATE
T100	48x24x24	\$1,166	\$1,549	\$2,178	\$1,349	\$1,843	\$2,374
T135	60x24x24	\$1,286	\$1,987	\$2,386	\$1,574	\$2,137	\$2,531
T170	72x24x24	\$1,408	\$2,316	\$2,827	\$1,798	\$2,437	\$2,689

## Pentagon Corner Aquariums

The Pentagon corner aquarium is one of the most exciting shapes offered by Tenecor. Certain to enhance any corner, this unique shape is ideal for efficiently utilizing available corner space without compromising aquarium size. All standard Pentagon aquariums feature bent (seamless) front corners



PENTAGON						
SPECIFICATIONS		AQUARIUMS			STANDS AND CANOPIES	
MODEL #	DIMENSIONS L"xW"xH"	SHOW AQUARIUM	SIMPLICITY PLUS	MARINE READY	ACRYLIC UNITEX/ TENETEX	OAK/MAPLE/ALDER FAUXSTONE/ LAMINATE
P065	30x30x24	\$581	\$861	\$1,234	\$1,085	\$1,460
P070	24x24x30	\$616	\$921	\$1,314	\$865	\$1,235
P080	30x30x30	\$944	\$1,440	\$1,740	\$1,085	\$1,460
P095	36x36x24	\$840	\$1,244	\$1,851	\$1,348	\$1,761
P120	36x36x30	\$1,205	\$1,714	\$2,218	\$1,348	\$1,761
P165	48x48x24	\$1,206	\$1,892	\$2,366	\$1,607	\$2,015
P200	48x48x30	\$1,362	\$2,328	\$2,778	\$1,607	\$2,015

## Quarter Cylinder Corner Aquariums

The elegant and clean lines of the Quarter Cylinder make it one of Tenecor's most popular corner aquariums. These models utilize Tenecor's oven-forming techniques to achieve a smooth radius front and provide a stunning seamless viewing area.



QUARTER CYLINDER							
SPECIFICATIONS		AQUARIUMS			STANDS AND CANOPIES		
MODEL #	DIMENSIONS L"xW"xH"	SHOW AQUARIUM	SIMPLICITY PLUS	MARINE READY	ACRYLIC	UNITEX TENETEX	OAK/MAPLE/ALDER FAUXSTONE/ LAMINATE
Q070	24x24x30	\$744	\$1,054	\$1,449	\$1,054	\$1,385	\$1,496
Q095	36x36x24	\$1,016	\$1,420	\$2,034	\$1,635	\$2,006	\$2,130
Q120	36x36x30	\$1,456	\$1,972	\$2,478	\$1,635	\$2,006	\$2,130

## L-Shape Corner Aquariums

L-Shape aquariums are the most recent example of a popular custom design becoming a standard Tenecor product. This exciting shape is the newest way to maximize viewing in a corner application. The L-shape makes efficient use of corner space while maximizing the viewing panels. The four viewing panels are formed from one solid piece of acrylic for completely seamless viewing area.



L - SHAPE						
SPECIFICATIONS		AQUARIUMS			STANDS AND CANOPIES	
MODEL #	DIMENSIONS L"xW"xH"	SHOW AQUARIUM	SIMPLICITY PLUS	MARINE READY	ACRYLIC UNITEX/ TENETEX	OAK/MAPLE/ALDER FAUXSTONE/ LAMINATE
<b>L095</b>	36x36x24	\$927	\$1,331	\$1,944	\$1,494	\$1,945

## Vista Corner Aquariums

A completely unique way to accent any corner, the Vista aquarium combines the features of our most popular styles for a breathtaking aquatic display. Seven viewing panels make the Vista a real attention getter which is sure to be the focal point of any room. Vista aquariums feature bent (seamless) front corners.



VISTA						
SPECIFICATIONS		AQUARIUMS			STANDS AND CANOPIES	
MODEL #	DIMENSIONS L"xW"xH"	SHOW AQUARIUM	SIMPLICITY PLUS	MARINE READY	ACRYLIC UNITEX/ TENETEX	OAK/MAPLE/ALDER FAUXSTONE/ LAMINATE
<b>V135</b>	48x48x24	\$1,221	\$1,906	\$2,620	\$1,757	\$2,538
<b>V170</b>	48x48x30	\$1,496	\$2,462	\$3,147	\$1,757	\$2,538



## Hexagon Aquariums


The standard Hexagon is a well known shape suitable for several applications. Clear hexagon aquariums are ideal for walk-around centerpieces. Hexagons with colored backs feature three colored panels and are great for corners or other tight spaces. Hexagons feature four bent corners and two seamed corners.



HEXAGON					
SPECIFICATIONS		AQUARIUMS		STANDS AND CANOPIES	
MODEL #	DIMENSIONS L"xW"xH"	SHOW AQUARIUM	MARINE READY	ACRYLIC UNITEX/ TENETEX	OAK/MAPLE/ ALDER FAUXSTONE/ LAMINATE
<b>H055</b>	25x24	\$344	\$1,042	\$764	\$1,045
<b>H075</b>	25x30	\$400	\$1,218	\$764	\$1,045

## Table Top Aquariums

<p><b>Model 8 Flat Back Hexagon Aquarium (18.5L" x 12W" x 18.5"H)-\$354</b>          Features a built-in wet/dry filter, black acrylic base &amp; canopy, and compact fluorescent light. Filter includes prefilter sponge, bio-media, and powerhead. Recommended for fresh or saltwater fish</p>	
<p><b>Model 12 Corner Pentagon Aquarium (16"L x 16"W x 18.8"H) - \$375</b>          Features a built-in wet/dry filter, black acrylic base &amp; canopy, and compact fluorescent light. Filter includes prefilter sponge, bio-media, and powerhead. Recommended for fresh or saltwater fish.</p>	

<p style="text-align: center;"><b><u>Living Picture Aquarium</u></b></p> <p>This beautiful wall mounted aquarium adds a graceful highlight to any home or office. The Living Picture aquarium provides the decorative beauty of a modern aquarium without the space requirements of conventional designs.          Dimensions: 48"L x 7"W x 30"H      Capacity: Approximately 15 Gallons          Included with each Living Picture:</p> <ul style="list-style-type: none"> <li>• Acrylic Aquarium - includes decorative background</li> <li>• Cabinet Enclosure - complete with hideaway storage</li> <li>• Picture Frame and Matte - available in a variety of color combinations</li> <li>• Compact Fluorescent Light - full spectrum</li> <li>• Wall Mounting Instructions - complete with all necessary hardware</li> <li>• Integrated Wet/Dry Filter including Powerhead, Pre-filter Sponge, Bio-Media and Water Reservoir for automatic evaporation replacement.</li> </ul> <p>Background options: Black, Dark Blue, Plant panorama, Reef panorama          Oak frame options: Black, Walnut, Beige (Pickled Oak)          Matte options: Maroon, Black, Bone</p>	 <p style="text-align: center;"><b>\$1,216</b></p>
--	--

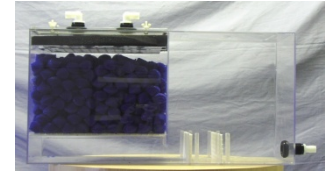
## Semi-Custom Options For Standard Aquariums And Furniture

Because Tenecor makes every aquarium to order, we are able to offer the following semi-custom options at a very reasonable cost. Use the options below to create the perfect aquarium from our standard product line.

AQUARIUM OPTIONS			Pricing/ Upcharge
L, W, H reduction of standard size, not applicable to Ultraaquariums (See Page 4)			\$105
Holes drilled in tank			\$12
Feeding hole in tank top, removeable recessed lip.			\$42
Square corners on tank (when normally bent)			\$33
Rounded (routed/polished) corner on tank (when normally square)	Per Corner		\$41
Substitute color panel for clear panel (up to .5" thick)	\$/ Sq. Ft.		\$5
Laminate color panel over clear panel (.75" thick and up)	\$/ Sq. Ft.		\$13
Recirculation system (includes holes, pump, plumbing)			\$372
STANDS AND CANOPIES			Pricing/ Upcharge
White or Ivory acrylic stand/canopy			Add 20%
Custom paint, stain, or non-Wilsonart laminate			\$105
L, W, H reduction of standard size Stand, not applicable to Ultraaquarium Stand (See Page 4)			\$105
L, W, H reduction of standard size Canopy, not applicable to Ultraaquarium Canopy (See Page 4)			\$105
Extra tall canopy (up to 14")			Add 25%
Extra tall stand (up to 42") with standard height doors			Add 25%
* Square corners on all extra tall acrylic stands			
Closed/finished back on canopy			Add 20%
* Acrylic canopy: Lift-off style with vent slots, no hinges on canopy			
* Non acrylic canopy: Lift-off lid(s) with vent slots, no hinges on canopy lid(s)			
Closed/finished back on stand--door(s) on one side, vent slots on opposite side			Add 20%
Closed/finished back on stand--door(s) on both sides			Add 35%
Double doors on Unitex/Tenetex or Wood stand			\$166
* Door size & availability depends on stand length			
2" Cooling Fan Package includes the drilling of the fan hole in canopy			\$62
4" Cooling Fan Package includes the drilling of the fan hole in canopy			\$62
Ventilation/fan holes up to 6" diameter			\$16
Lock installed on door			\$26

### External Wet/Dry Filters

Tenecor external wet/dry filters are ideal for fresh or saltwater aquariums. Filters come complete with ABS drip tray, filter pad, carbon gates, inlet & outlet bulkheads,. These filters will accommodate internal or external pumps and are available with or without bio-balls. Tenecor wet/dry filters may be upgraded with one of our protein skimmer packages for saltwater systems. Tenecor all-natural drip tray sponges are recommended for additional mechanical filtration.



FILTRATION								
SPECIFICATIONS		PERFORMANCE		STANDARD PLUMBING		UNIT PRICES		
MODEL #	DIMENSIONS L"xW"xH"	BIO-MEDIA CAPACITY	RATING (APPROX)	INLETS QTY - SIZE	OUTLETS QTY - SIZE	BARE NO MEDIA	6+ UNITS	WITH MEDIA
8-75	16x8x14	3 gallons	75 gallons	1 - 1"	NA	\$210	\$200	\$232
20-125	22x13x16	8 gallons	125 gallons	1 - 1"	1 - 1"	\$299	\$284	\$355
29-180	30x12x18	11 gallons	180 gallons	2 - 1"	1 - 1"	\$329	\$312	\$408
40-300	36x15x16	15 gallons	300 gallons	2 - 1"	2 - 1"	\$354	\$336	\$459
60-500	48x15x20	25 gallons	500 gallons	2 - 1.5"	2 - 1.5"	\$468	\$445	\$644
100-800	60x18x20	40 gallons	800 gallons	2 - 1.5"	2 - 1.5"	\$822	\$781	\$1,101
125-1200	72x18x20	60 gallons	1200 gallons	4 - 1.5"	4 - 1.5"	\$1,172	\$1,113	\$1,592

### **Internal Pre-Filter Overflows**

Tenecor's in-tank pre-filters are available as "bare" boxes without holes drilled in the aquarium or pre-filter, "drilled" boxes with holes in the pre-filter to customer specification or as "plumbed, ready-to-run" boxes with Tenecor supplied RTR (plumbing) kits. Standard skimming slots on internal pre-filters are ¼" wide x 1 ½" long. Pre-filters are offered in blue or black. Tenecor also can install external pre-filters on aquariums as a custom order.

- **Bare pre-filters** require the customer to drill holes in the aquarium and pre-filter as well as provide plumbing fittings (see **Tenecor** aquarium warranty on page 24).
- **Drilled pre-filters** require the customer to give Tenecor the specifications of the bulkheads/fittings that will be used in the pre-filter.
- **RTR (plumbed) pre-filters** include drain and return fittings, and vinyl tubing for return lines inside the prefilter. Return holes are drilled in the pre-filter wall approximately 3" below the top of the pre-filter. Return holes are threaded ½", ¾" diameter to accommodate adjustable ¾" or ½" "centipedes" (return nozzles). Drains can be 1" Sch. 40 bulkheads, or 1.5" Sch. 80 bulkheads. All return bulkheads are Sch. 40. Plumbed pre-filters also include adjustable Centipedes.
- **Modifications** to the standard pre-filter slot or plumbing configurations are available. Customer must specify the desired configuration.



BARE INTERNAL PRE-FILTERS	TANK HEIGHTS & PRICES			
SHAPE, TYPE, L&W	30"	36"	48"	60"
<b>CORNER PRE-FILTERS</b>				
5"x5", 6"x6", 8"x5", 8"x8"	\$71	\$98	\$123	\$377
<b>TRAPEZOID PRE-FILTERS</b>				
15"x5", 18"x5"	\$95	\$139	\$174	\$629
24"x5"	\$158	\$184	\$246	\$754
36"x5"	\$207	\$245	\$309	\$936
48"x6"	\$270	\$320	\$428	\$1,161
<b>COLUMN PRE-FILTERS</b>				
6"x6", 7"x7", 8"x8", 9"x6"	\$155	\$181	\$229	\$576
9"x9", 10"x10", 12"x12"	\$185	\$216	\$278	\$688
<b>PRE-FILTER DRILLING OR MODIFICATION (PRICE PER TANK)</b>				
Modify PF slots or drill/modify PF hole(s) per customer specification:				\$47
<b>PRE-FILTER RTR (PLUMBING) KITS (PRICE PER PRE-FILTER)</b>				
Single 1" Drain, Single 1/2" or 3/4" Return, with Centipede:				\$44
Single 1" Drain, Dual 1/2" or 3/4" Return, with Centipedes:				\$66
Dual 1" Drains, Dual 1/2" or 3/4" Returns, with Centipedes:				\$78
Single 1.5" Drain, Dual 3/4" Returns, with Centipedes:				\$93
Dual 1.5" Drains, Quad 3/4" Returns, with Centipedes:				\$160
<b>PRE-FILTER OPTIONS</b>				
Pre-Filter Lid				\$38
Electrical Dry Raceway				\$51
1" Silencer				\$53
1.5" Silencer				\$68

### **Marine Ready Protein Skimmer Packages**

Tenecor Protein Skimmer packages may be used to **upgrade** any of our wet/dry filters or Marine Ready aquarium systems. Use of protein skimmers will greatly enhance the performance of filtration systems used for saltwater and reef aquariums.

<b>Seaclore® Berlin Package.</b> For model 8-75 wet/dry filters. Package includes Seaclore® venturi protein skimmer with pump and plumbing modifications to the wet/dry filter.	\$179
<b>Reef Devil Deluxe® "Downdraft" Skimmer Package.</b> Recommended for use with 100-150 gallon systems. Package includes protein skimmer, water supply pump and plumbing modifications to the wet/dry filter. Used with 20-125 and 29-180 wet/dry filters.	\$421
<b>ETS600 Professional® "Downdraft" Skimmer Package.</b> Recommended for use with 150-300 gallon systems. Package includes protein skimmer, water supply pump and plumbing modifications to the wet/dry filter. Used with 29-180 and 40-300 wet/dry filters.	\$920
<b>Aqua Medic "Berlin" Package.</b> Recommended for >300 gallon systems. Rated capacity is 400 gallons. Package includes Aqua Medic Turbo 5000 venturi protein skimmer, internal venturi pump, additional water supply pump, and plumbing modifications to the wet/dry filter. Used with 60-500 and larger wet/dry filters.	\$1056

## Protein Skimmers For Simplicity Plus Aquariums

<b>Red Sea® Air Lift 60 Protein Skimmers.</b> Recommended for use with Simplicity Plus aquariums that are 36" long or more, and less than 20" high. Requires additional air pump to operate. Dimensions are 3.5" diameter x 12" high	\$90
<b>Red Sea® Air Lift 90 Protein Skimmer - \$76</b> Recommended for use with Simplicity Plus aquariums that are 36" long or more, and 20" high or more. Requires additional air pump to operate. Dimensions are 3.5" diameter x 16.5" high.	\$97

### Economy Stands

This stand utilizes our popular Unitex/Tenetex Ebony Slate color to provide an attractive and economical alternative for your show aquarium. Stand is 36 L x 18 W x 30 H for tanks up to 75 gallons. Available only in Ebony Slate. Assembly required. **Price: \$193**



AQUA-LITE COMPACT FLUORESCENT - FRESHWATER AQUARIUM						
MODEL #	DIMENSIONS L" x W" x H"	ITEM DESCRIPTION	NUMBER OF BULBS	WATTS PER BULB	TOTAL WATTS	UNIT PRICE
AL6524S	24x5x2.5	1 65W BULB	1	65	65	\$90
AL6530S	30x5x2.5	1 65W BULB	1	65	65	\$100
AL9636S	36x5x2.5	1 96W BULB	1	96	96	\$153
AL0909D	9x5x2.5	2 9W BULBS	2	9	18	\$39
AL6524D	24x7x2.5	2 65W BULBS	2	65	130	\$198
AL6530D	30x7x2.5	2 65W BULBS	2	65	130	\$230
AL9636D	36x7x2.5	2 96W BULBS	2	96	192	\$318
AL9620Q	20x7x2.5	1 96W 'QUAD' BULB	1	96	96	\$174
AL6548Q	48x7x2.5	4 65W BULBS	4	65	260	\$317
SUNPAQ COMPACT FLUORESCENT - SALTWATER AQUARIUM						
MODEL #	DIMENSIONS L" x W" x H"	ITEM DESCRIPTION	NUMBER OF BULBS	WATTAGE PER BULB	TOTAL WATTS	UNIT PRICE
SP3214S	14x5x2	1 32W DAY/ACT	1	32	32	\$102
SP4018S	18x5x2	1 40W DAY/ACT	1	40	40	\$114
SP6524S	23x5x2	1 65W DAY/ACT	1	65	65	\$123
SP9635S	35x5x2	1 96W DAY/ACT	1	96	96	\$146
SP9618Q	17.5x5.5x2	1 96W 'QUAD' DAY/ACT	1	96	96	\$146
SP3214D	14x10x2	2 32W DAY/ACT	2	32	64	\$167
SP4018D	18x10x2	2 40W DAY/ACT	2	40	80	\$175
SP6524D	23x10x2	2 65W DAY/ACT	2	65	130	\$190
SP9635D	35x10x2	2 96W DAY/ACT	2	96	192	\$255
CURRENT ORBIT COMPACT FLUORESCENT						
MODEL #	DIMENSIONS L" x W" x H"	ITEM DESCRIPTION	NUMBER OF BULBS	LUNAR LIGHTS	TOTAL WATTS	UNIT PRICE
ORBIT20	20.5"x8.25"x4.5"	2 40W DAY/ACT BULBS, 1 LUNAR LITE, FAN	2	1	80	\$161
ORBIT24	24.75"x8.25"x4.5"	2 65W DAY/ACT BULBS, 2 LUNAR LITES, FAN	2	2	130	\$215
ORBIT30	30.25"x8.25"x4.5"	2 65W DAY/ACT BULBS, 2 LUNAR LITES, FAN	2	2	130	\$226
ORBIT36-1	36.75"x8.25"x4.5"	2 96W DAY/ACT BULBS, 3 LUNAR LITES, FAN	2	3	192	\$328
ORBIT36-2	36.75"x11.6"x4.25"	4 96W DAY/ACT BULBS, 3 LUNAR LITES, FANS	4	3	384	\$609
ORBIT48-65W	48.25"x8.25"x4.5"	4 65W DAY/ACT BULBS, 4 LUNAR LITES, FAN	4	4	260	\$359
ORBIT48-96W	48.25"x11.6"x4.25"	4 96W DAY/ACT BULBS, 4 LUNAR LITES, FANS	4	4	384	\$705
ORBIT60	60"x8.25"x4.5"	4 65W DAY/ACT BULBS, 5 LUNAR LITES, FAN	4	5	260	\$385
ORBIT72-1	72"x8.25"x4.5"	4 96W DAY/ACT BULBS,	4	6	384	\$637
ORBIT72-2	72"x11.6"x4.25	6 96W DAY/ACT BULBS,	6	6	576	\$1,015
CURRENT ORBIT SATELLITE FLUORESCENT						
MODEL #	DIMENSIONS L" x W" x H"	ITEM DESCRIPTION	NUMBER OF BULBS	LUNAR LIGHTS	TOTAL WATTS	UNIT PRICE
SATELLITE12	13x5.25x2.5	1 18W DAY/ACT BULB, 1	1	1	18	\$61
SATELLITE20	20x5.25x2.5	1 40W DAY/ACT BULB, 1 LUNAR LITE	1	1	40	\$74
SATELLITE24	24.5x5.25x2.5	1 65W DAY/ACT BULB, 1 LUNAR LITE	1	1	65	\$79
SATELLITE30	30x5.25x2.5	1 65W DAY/ACT BULB, 1	1	1	65	\$100
SATELLITE36	36.75x5.25x2.5	1 96W DAY/ACT BULB, 1 LUNAR LITE	1	1	96	\$128
SATELLITE48	48.25x5.25x2.5	2 65W DAY/ACT BULBS, 2 LUNAR LITES	2	2	130	\$161
SATELLITE12DUAL	13x7.25x2.5	2 18W DAY/ACT BULB, 1 LUNAR LITE	2	1	36	\$120
SATELLITE20DUAL	20x7.25x2.5	2 40W DAY/ACT BULB, 1 LUNAR LITE, FAN	2	1	80	\$140
SATELLITE24DUAL	24.5x7.25x2.5	2 65W DAY/ACT BULBS, 1 LUNAR LITE, FAN	2	1	130	\$172
SATELLITE30DUAL	30x7.25x2.5	2 65W DAY/ACT BULBS, 1 LUNAR LITE, FAN	2	1	130	\$180
SATELLITE36DUAL	36.75x7.25x2.5	2 96W DAY/ACT BULBS,	2	1	192	\$252
SATELLITE48DUAL	48.25x7.25x2.5	4 65W DAY/ACT BULBS,	4	2	260	\$293

## **Aquarium Maintenance Products**

AQUARIUM CLEANING SUPPLIES		
MODEL - SPECIFICATIONS	DESCRIPTION & DIMENSIONS	Pricing
NOVUS 1 8OZ	8 OZ. NOVUS 1 CLEANER AND POLISHER	\$17
NOVUS 2 8OZ	8 OZ. NOVUS 2 MILD BUFFING CRÈME MINOR SCRATCHES	\$25
NOVUS 3 8OZ	8 OZ. NOVUS 3 AGGRESSIVE BUFFING COMPOUND	\$29
PLEXUS7	7 OZ. PLEXUS CLEANER, POLISHER AND PROTECTANT	\$13
PLEXUS13	13 OZ. PLEXUS CLEANER, POLISHER AND PROTECTANT	\$18
MICRO-MESH KIT	WET SANDING SYSTEM FOR DEEP SCRATCHES	\$48
POLISHING CLOTH	12 ULTRA SOFT REUSABLE POLISHING CLOTHS FOR ACRYLIC	\$17
DELUXE CARE PACKAGE	INCL. MM KIT - NOVUS 1,2,3 - 7OZ PLEXUS - 12 POLISHING CLOTHS	\$132
ECONOMY CARE PKG	INCL. 8OZ. NOVUS 1,2,3 - 7OZ. PLEXUS - 12 POLISHING CLOTHS	\$94
NOVUSCAREPKG	INCL. 8OZ. NOVUS 1,2,3	\$65
AQUARIUM ACCESSORIES		
MODEL - SPECIFICATIONS	DESCRIPTION & DIMENSIONS	Pricing
CENT - 1/2"	FLEXIBLE "Y" FITTING 6" L X .5" DIAMETER CENT RETURN KIT	\$34
CENT-L - 3/4"	FLEXIBLE "Y" FITTING 6.5" L X .75" DIAMETER CENT RETURN KIT	\$40
CENT-R - 3/4"	FLEXIBLE "Y" FITTING 6.5" L X .75" DIAMETER CENT RETURN KIT (down to .500 Nozzle)	\$40

## **Important Information For Tenecor Aquarium Owners**

- Do not use any product that contains ammonia, alcohol, or abrasives such as Windex, Comet, Ajax or other commercial cleaners when cleaning the acrylic surfaces of your Tenecor aquarium. Also protect your aquarium from chemical fumes, including paint, varnish, etc. Use or exposure to such cleaners or fumes will cause the acrylic to gradually lose its clarity.
- Do not use coarse sponges or pads to clean the aquarium. A soft cloth and water or polish made specifically for acrylic should be used for cleaning.
- Use of a perimeter support stand, even temporarily, will void the warranty. The aquarium bottom must be fully supported on a flat level surface at all times.



TENECOR  
WORLD'S FINEST AQUARIUMS  
**Terms & Definitions**

The following guide defines general aquarium terms as well as specific Tenecor product descriptions.

**Aquarium** - A water filled container in which to keep and raise aquatic animals and plants.

**Bent Corners** - Corners which are heat bent to achieve a smooth, seamless appearance.

**Bio-Media** - (also bio-balls) Porous plastic balls with high surface area. Conducive to growing beneficial bacteria for biological filtration.

**Centipede** - A return fitting with flexible segments used to direct water flow in the tank.

**Drain** - A plumbing connection used to remove water from the tank. Usually located in the pre-filter.

**Fauxstone** - A Tenecor original finish for stands and canopies. This versatile finish recreates the look and style of the southwest with a Spanish stucco texture.

**Pre-Filter** - (also overflow, skimmer box, weir) - A column or box used to control water flow and route plumbing to and from the aquarium tank. Usually used in conjunction with external wet/dry filtration.

**Protein Skimmer** - A device used to remove excess waste products from saltwater aquariums. These devices produce a churning effect to separate the waste products which are then held in a collection cup until it can be emptied.

**Marine Ready Aquarium** - An aquarium with external wet/dry filtration which utilizes mechanical, chemical, and biological filtration which is ideal for more demanding saltwater and reef systems. Marine Ready aquariums come complete with plumbed pre-filter, external wet/dry filter, bio-media, pumps, and plumbing connections. Available with a clear, black, or blue background. Marine Ready aquariums may be upgraded with our Protein Skimmer packages.

**Return** - Plumbing fittings used to return water to the tank. Usually located in the pre-filter.

**Rounded Corners** - Traditional square corners which are routered and then polished to achieve a smooth rounded look on larger aquariums.

**Show Aquarium** - An improved version of the traditional basic aquarium. Show Aquariums include extra large access openings, heavy duty lids, and filter slots. Models of 72" in length or less feature seamless bent front corners. Available with a clear, black, or blue background.

**Simplicity Plus Aquarium** - An aquarium with internal wet/dry filtration which utilizes mechanical, chemical, and biological filtration. The system is built into the tank and hidden from view by a blue or black false back. Simplicity Plus filters come complete with bio-media, powerhead(s), pre-filter sponge, and centipede returns installed at the factory. Simplicity Plus aquariums are suitable for fresh or saltwater fish.

**Tenetex** - (also Unitex) A Tenecor original finish for stands and canopies. These water resistant finishes create the rich look of stone in thirteen popular color combinations.

**Wet/Dry Filter** - An external filter which utilizes mechanical, chemical, and biological filtration. Usually used in conjunction with a pre-filter to route water flow to and from the wet/dry filter. Available from Tenecor in seven standard sizes or custom designs.



## **Freight Policies And Procedures**

Tenecor's standard aquarium delivery service is "curbside delivery". This means your order will be delivered to the curb of the address you specify as the "ship to" address on your order. You will need to be prepared to remove the items on your order from the back of the truck. The delivery charge does not include inside delivery or setup of the aquarium. Deliveries are normally made between 8:00 AM and 5:00 PM Monday through Friday. Accessory item shipments are made by UPS. We rarely have shipping damage to our orders, but to insure that your aquarium is everything you expect we ask you to follow a few procedures.

### **RECEIVING PROCEDURES**

**1. Inspect the shipment before you sign for the delivery.** The driver may insist you sign for the delivery first, but you have the right to inspect the shipment for damage and must do so.

**2. Carefully check the entire shipment for any signs of obvious damage**, such as tears in the packaging, broken straps or damage to the skid **or obvious missing items**. If you find any such damage open the packaging, in the driver's presence, as much as possible and attempt to determine if there is additional "hidden" damage to the aquarium or furniture. Have the driver note on both copies of the freight bill the nature and extent of the damage to packaging or contents. Sign for the shipment and make sure the driver signs your copy. Immediately notify Tenecor by phone of the nature of the damage. Your sales representative will assist you in determining whether to accept the shipment or refuse it.

**3.** After you have received your shipment and removed it from the curb, open all packaging and boxes and verify that your order is complete and there is no damage to the aquarium, furniture or other items. Accessory items are often in boxes inside the aquarium stand or canopy (if you purchased one) so please open all items and look for boxes. If you discover damaged or missing items you **must notify Tenecor within 48 hours of receipt**. Call your Tenecor sales representative to report such damage. You may be requested to send pictures of the damage so we can determine the best course of action. If Tenecor is notified of damage within 48 hours of receipt Tenecor will handle returns, replacement and freight claims. Keep all packaging materials from the shipment for inspection and freight claim purposes. Tenecor will advise you of procedures for returning or discarding damaged items and shipping materials. **If we are not notified within 48 hours of receipt, you will be responsible for return, replacement and freight claims for the damaged or missing items.**

### **COMMON MISTAKES TO AVOID**

- \* Do not assume the piece count is correct just because the pallet is shrink wrapped. Pieces can slip out of the wrap.
- \* Don't have someone else accept the shipment unless they are familiar with these procedures. If a neighbor, relative or employee signs for the shipment as being in good shape, you lose the same rights as if you had signed it yourself.
- \* Don't assume that loose pieces are fine. In fact, you can assume that they are damaged. **Tenecor** puts all common carrier shipments on a pallet for one reason - to protect your merchandise.

Hopefully, your merchandise will never be damaged. We at **Tenecor** are constantly researching ways to reduce this possibility. If you have any questions regarding these procedures, please call **Tenecor** for more information



## **Terms And Conditions Of Sale**

**PAYMENT** - All retail sales must be 100% prepaid. Checks, money orders, and major credit cards are accepted. Non-certified checks may be held for 10 days before starting order. There is a \$25.00 charge for all returned checks. Shipments delayed by customer request will be assessed a \$20.00 per day storage fee.

**MINIMUM ORDER** - \$100.00.

**RETURN/CANCELLATION POLICY** - Tenecor products are made to order and cannot be returned or cancelled once the order is started. All returns require a "Return Authorization Number" (RAN) and prepaid freight. Returns must be in their original unopened packaging. Unauthorized returns will not be accepted. All authorized returns or order cancellations will incur a 20% restocking or cancellation charge.

**ORDER CHANGES** – Once an order is entered it is generally not possible to change the order without significant change order charges. The minimum change order charge is \$150. Additional charges for redesign, material reorder, rebuild etc. may apply as well as a delay in estimated ship date.

The terms and conditions above are subject to change - in whole or in part - at any time without prior notice.

## **Tenecor Aquarium Warranty**

Tenecor Aquariums, a division of CMN Plastics, warrants all manufactured tanks against external leakage due to faulty craftsmanship for the lifetime \* of the aquarium when a solid top aquarium stand is used to support the tank.

**USE OF A PERIMETER SUPPORT STAND VOIDS THE WARRANTY. THE AQUARIUM BOTTOM MUST BE FULLY SUPPORTED ON A FLAT, LEVEL SURFACE.**

This warranty is subject to the following conditions:

Failure must be the result of a defect in manufacture and not due to improper use, defective material, accident, misuse, abuse or act of Nature. Modification or alteration of the aquarium by drilling, cutting, sawing, gluing anything to, bending, melting, tapping or other similar means voids the warranty. Our liability to the purchaser is limited to the replacement value of the tank and does not extend to the contents or any other consequential damage. \*Defective standard aquariums will be repaired or replaced by Tenecor, at our option, during the first two years from the date of purchase at no additional cost to the purchaser. Repair or replacement value from year two to year four will be limited to 40% of the prevailing Tenecor dealer price. Repair or replacement value from year four and on will be limited to 20% of the prevailing Tenecor dealer price.

To be effective, the warranty sheet that comes with your aquarium must be filled out completely and mailed to the factory within Ten (10) days from date of purchase along with proof of purchase, such as a copy of the sales invoice or receipt.

Upon discovery of failure, Tenecor will repair or replace the aquarium, at our option, provided it is returned freight prepaid to Tenecor Aquariums, 4300 E. Magnolia, Phoenix, AZ 85034.

This warranty gives you specific legal rights. You may also have implied warranty rights.